

# SCLD/SCLB

## »» Features

- 5A general purpose Power Relay.
- DPDT & 4PDT contact configurations.
- AC & DC coil.
- Epoxy sealed type and or flux free type.
- Optional to be equipped with lamp, diode, flashed contact, and flanged cover.
- Comply with RoHS-Directive 2002/95/EC.



## »» Type List

Terminal style	Contact form	Designation (provided with)	Enclosure style		
			Straight cover	Flanged cover	Sealed type washable
W (Quick terminal)	4PDT	-----	SCLD-W-B-4PDT-C	SCLD-W-B-4PDT-C1	SCLD-W-B-4PDT-S
	DPDT		SCLB-W-DPDT-C	SCLB-W-DPDT-C1	SCLB-W-DPDT-S
	4PDT	Diode	SCLD-W-B-D-4PDT-C	SCLD-W-B-D-4PDT-C1	SCLD-W-B-D-4PDT-S
	DPDT		SCLB-W-D-DPDT-C	SCLB-W-D-DPDT-C1	-----
	4PDT	Au plating contact	SCLD-W-B-F-4PDT-C	SCLD-W-B-F-4PDT-C1	SCLD-W-B-F-4PDT-S
	DPDT		SCLB-W-F-DPDT-C	SCLB-W-F-DPDT-C1	-----
	4PDT	Lamp	SCLD-W-B-L-4PDT-C	SCLD-W-B-L-4PDT-C1	SCLD-W-B-L-4PDT-S
	DPDT		SCLB-W-L-DPDT-C	SCLB-W-L-DPDT-C1	-----
P (PCB terminal)	4PDT	-----	SCLD-P-B-4PDT-C	-----	SCLD-P-B-4PDT-S
	DPDT		SCLB-P-DPDT-C	-----	-----
	4PDT	Diode	SCLD-P-B-D-4PDT-C	-----	SCLD-P-B-D-4PDT-S
	DPDT		SCLB-P-D-DPDT-C	-----	-----
	4PDT	Au plating contact	SCLD-P-B-F-4PDT-C	-----	SCLD-P-B-F-4PDT-S
	DPDT		SCLB-P-F-DPDT-C	-----	-----
	4PDT	Lamp	SCLD-P-B-L-4PDT-C	-----	SCLD-P-B-L-4PDT-S
	DPDT		SCLB-P-L-DPDT-C	-----	-----
	4PDT	Manual	SCLD-P-B-M-4PDT-C	-----	-----
	DPDT		SCLB-P-M-DPDT-C	-----	-----

## »» Ordering Information

SCL B - P - □ - □ - DPDT - □  
 1 2 3 4 5 6 7

- |   |  |
|---|--|
| <p>1. SCL -- Basic series designation</p> <p>2. B -- Double pole<br/>D -- Four pole</p> | <p>3. P -- PCB terminal<br/>W -- Quick terminal</p> <p>4. Blank -- Without any special features<br/>B -- Provided with contact barrier</p> |
|---|--|

# SCLD/SCLB

- |   |                                |
|---|--------------------------------|
| 5. Blank -- No special features             | 4PDT -- Four pole double throw |
| D -- Diode across coil                      |                                |
| F -- Ag contact with Au plating - 3A rating | 7. Blank -- Open type          |
| L -- Provided with pilot light              | C -- Straight cover            |
| M -- Provided with manual operator          | C1 -- Flanged cover            |
|   | V -- Sealed type               |
| 6. DPDT -- Double pole double throw         | S -- Sealed type washable      |

## »» Contact Rating

Resistive load	5A 28VDC	General Use	5A 250VAC
----------------	----------	-------------	-----------

## »» Coil Rating (DC)

Rated voltage (V)	Rated current ±10 % at 23°C (mA)	Coil resistance ±10 % at 23°C (Ω)	Max. continuous voltage at 70°C	Pick up voltage(Max) at 23°C	Drop out voltage(Min) at 23°C	Power consumption at rated voltage
6	150	40	110 % of rated voltage	75 % of rated voltage	10 % of rated voltage	approx. 0.9W
12	75	160				
15	60	250				
24	37	650				
48	19	2600				
110	10	11000				
120	11	11000				

## »» Coil Rating (AC)

Rated voltage (V)	Coil resistance ±10 % at 23°C (Ω)	Max. continuous voltage at 70°C	Pick up voltage(Max) at 23°C	Drop out voltage(Min) at 23°C	Power consumption at rated voltage
12	40	110 % of rated voltage	85 % of rated voltage	30 % of rated voltage	approx. 1.2VA
24	160				
100	3400				
110	3400				
115	3400				
120	3400				
220	13600				
230	13600				
240	13600				

# SCLD/SCLB

## »» Specification

Contact material	AgNi / AgSnO alloy	
Contact resistance <sup>(1)</sup>	50mΩ Max. (1A/6VDC by 4 pipes mΩ meter)	
Operate time <sup>(1)</sup>	25 ms Max.	
Release time <sup>(1)</sup>	25 ms Max.	
Insulation resistance <sup>(1)</sup>	100 MΩ Min. (DC 500V)	
Dielectric strength <sup>(1)</sup>	Between open contact	: AC 500V , 50/60Hz 1 min.
	Between contact and coil	: AC 1500V , 50/60Hz 1 min.
	Between contact circuits	: AC 1500V , 50/60Hz 1 min.
Vibration resistance	Operating extremes	10~55Hz , amplitude 1.0 mm
	Damage limits	10~55Hz , amplitude 1.0 mm
Shock resistance	Operating extremes	20G
	Damage limits	100G
Life expectancy	Mechanical	10,000,000 operations (frequency 18,000 operations/hr)
	Electrical	100,000 operations (frequency 1,800 operations/hr)
Operating ambient temperature	-25~+70°C (no freezing)	
Weight	Approx. 35 g (LD) · 32 g (LB)	

Note : (1) initial value

## »» Safety Approval

Certified	UL	CSA	TUV	FIMKO
File No.	E88991	1474292	R3-09452080	24562

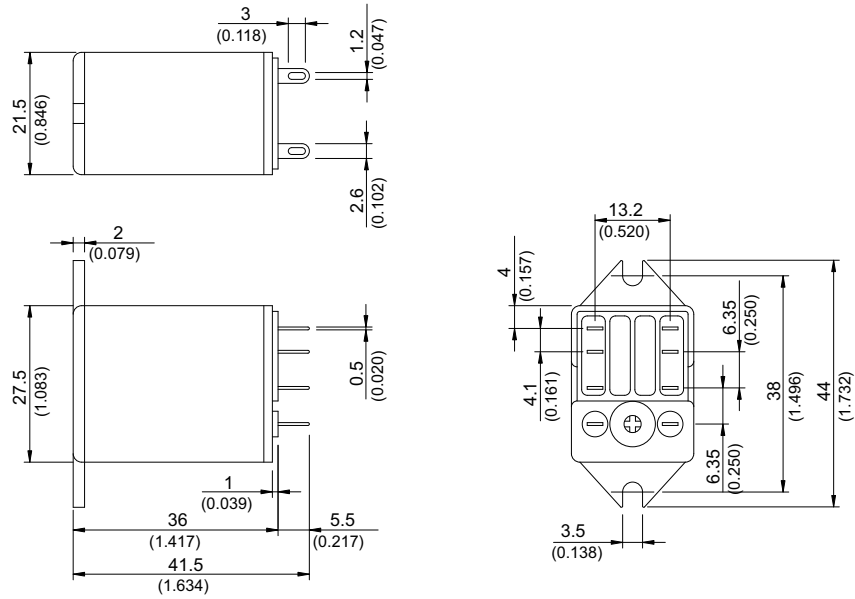
## »» Safety Approval Rating

UL	CSA	UL & CSA (-F)	TUV	FIMKO
5A 250VAC 5A 28VDC 1/8HP 3.8FLA,120VAC	5A 250VAC 5A 28VDC	3A 250VAC 3A 30VDC	5A 250VAC 5A 30VDC	5A 250VAC

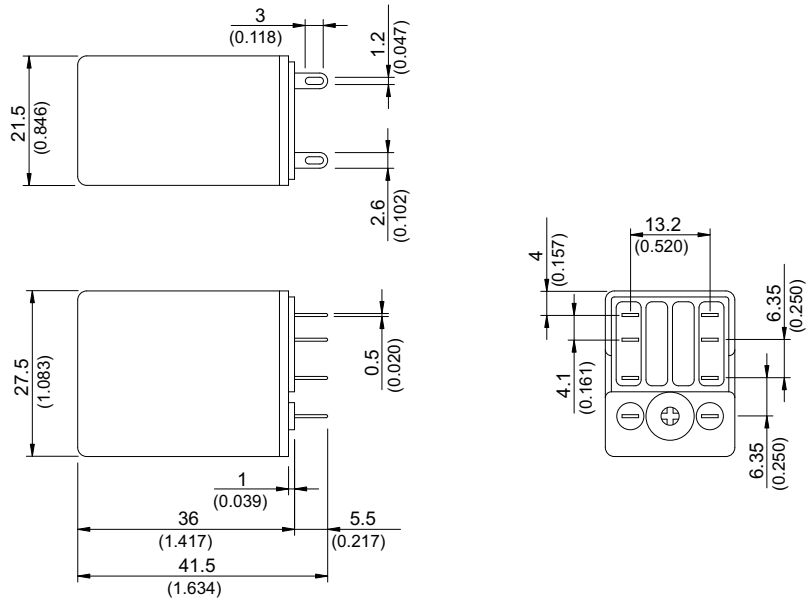
# SCLD/SCLB

## »» Outline Dimensions

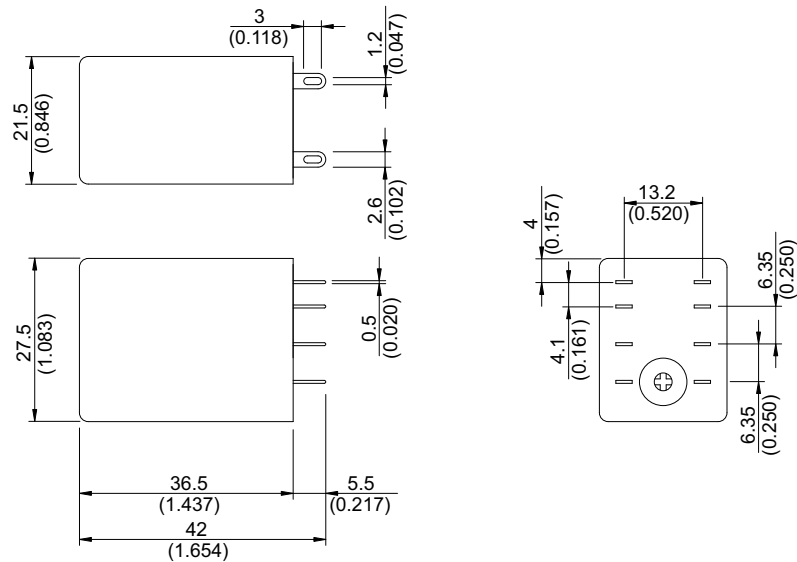
### ◆LB-W C1



### ◆LB-W C

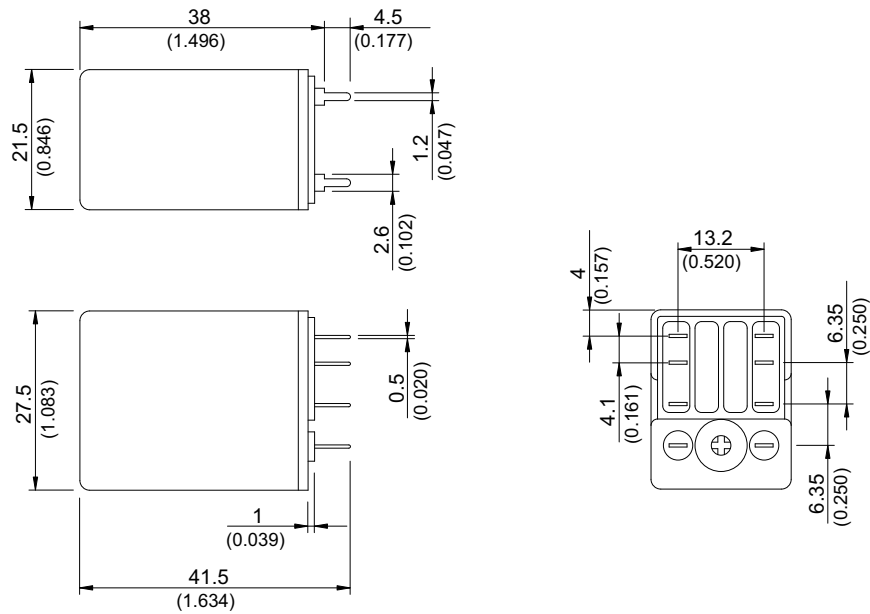


### ◆LB-W S

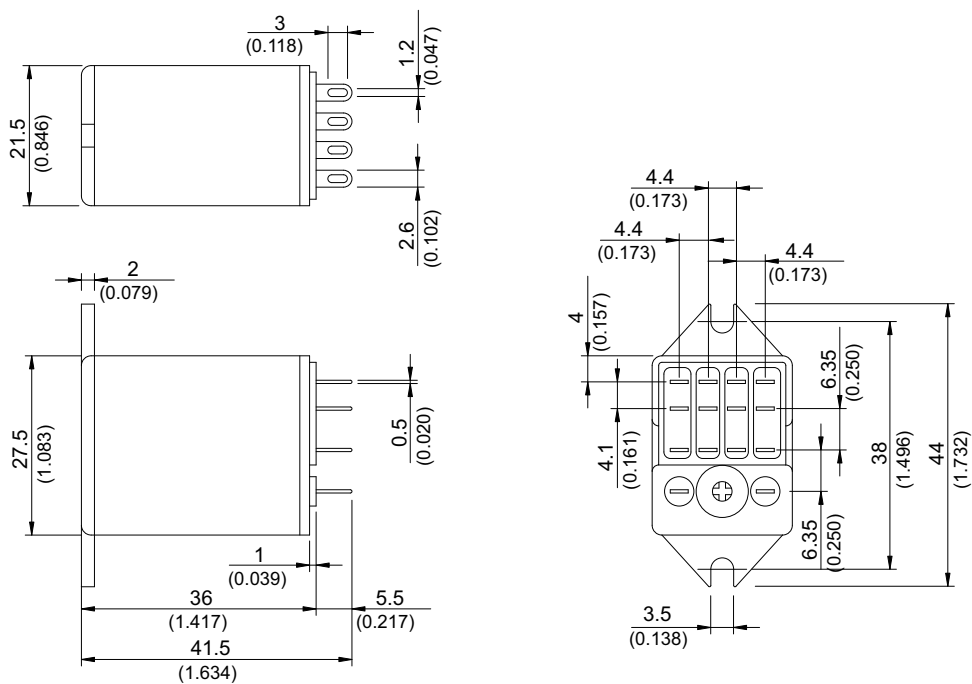


# SCLD/SCLB

## ◆LB-P C

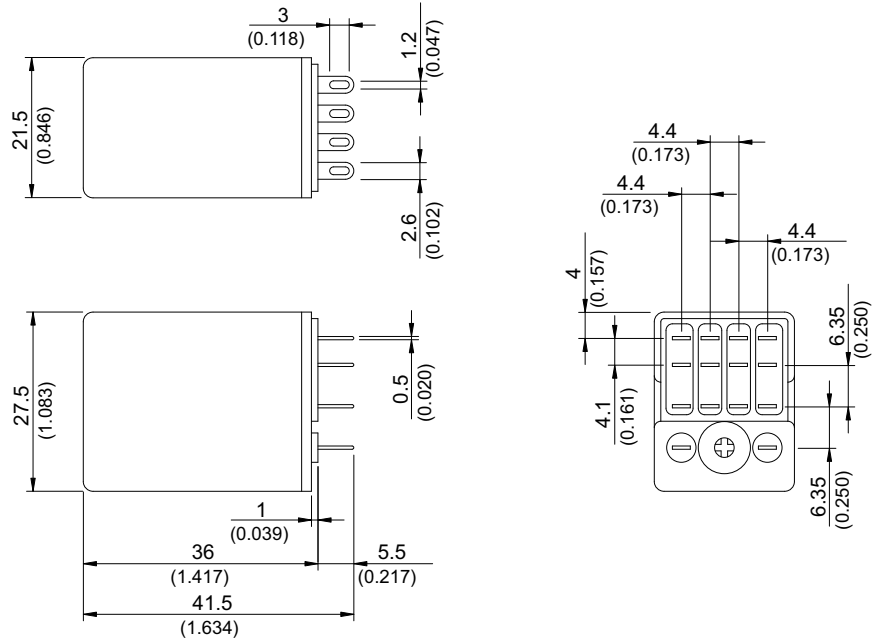


## ◆LD-W C1

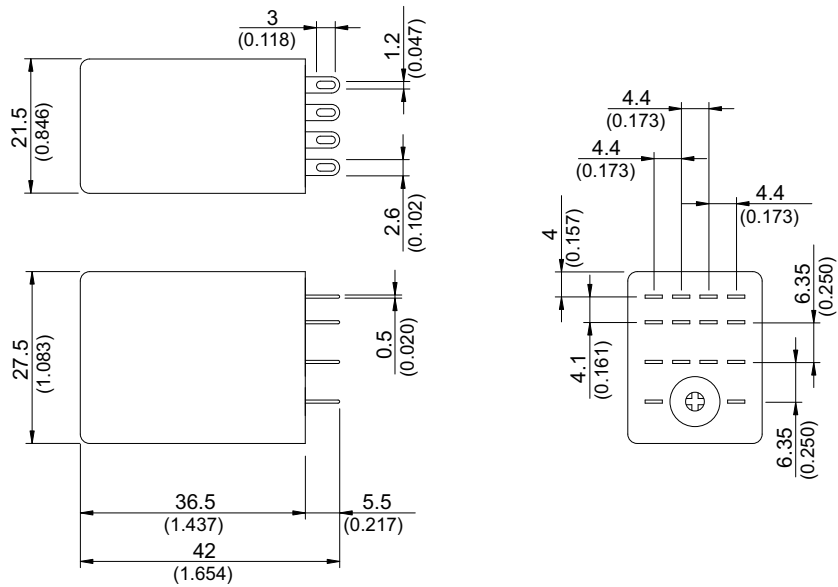


# SCLD/SCLB

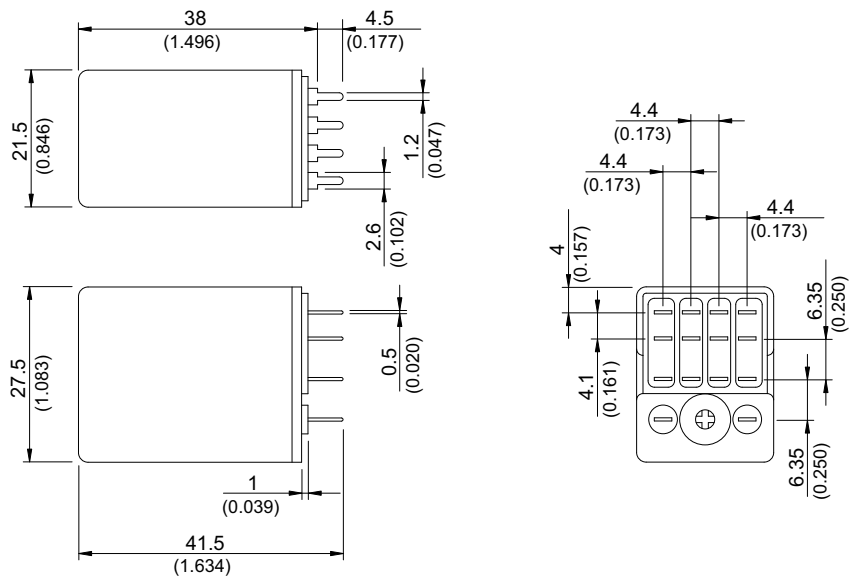
## ◆LD-W C



## ◆LD-W S

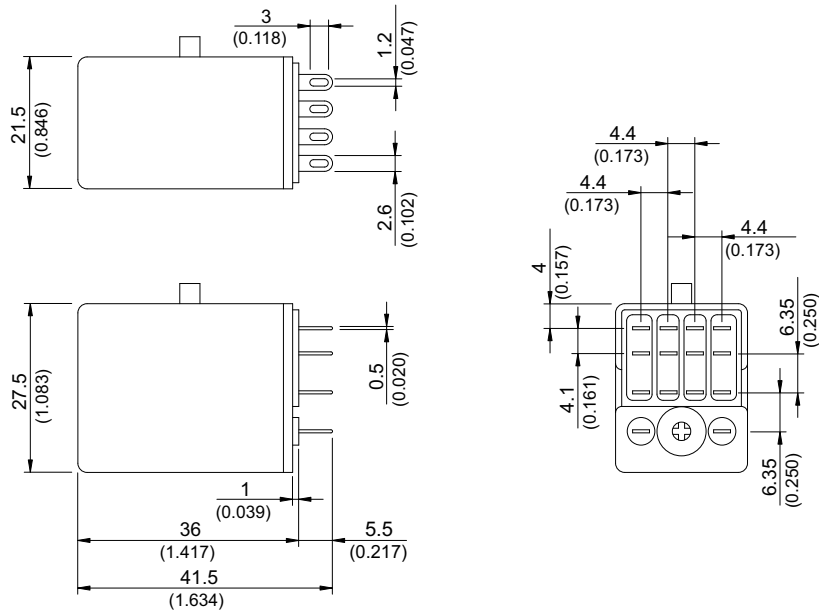


## ◆LD-P C



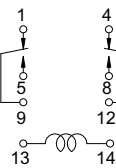
# SCLD/SCLB

## ◆LD-W M

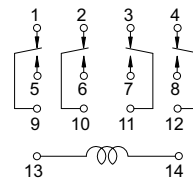


## »» Wiring Diagram BOTTOM VIEW

### DPDT

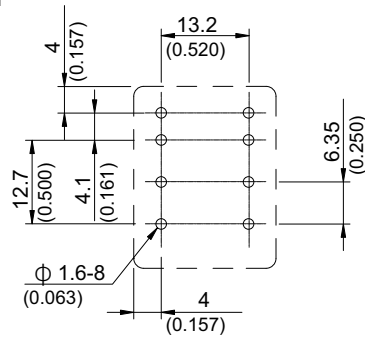


### 4PDT

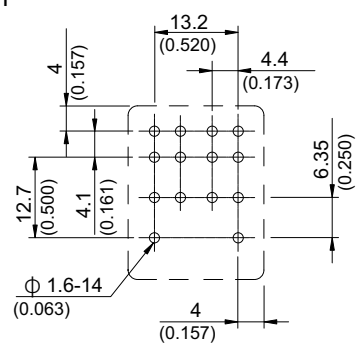


## »» PC Board Layout BOTTOM VIEW

### DPDT

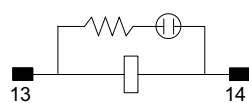


### 4PDT

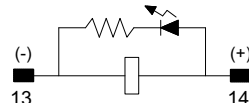


## »» Designation(Provided with) BOTTOM VIEW

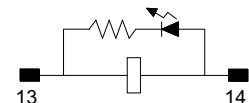
### Lamp



(100~240VAC)

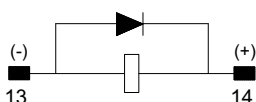


(6~48VDC)



(6~48VAC)

### Diode



# SCLD/SCLB

## »» Engineering Data

